

INDIAN MOUNTAIN National Park



The official tourist guide of Indian Mountain National Park

TOURIST GUIDE



Contains Regional Event & Location Map

Presented by the National Park Foundation

www.nationalpark.org



“There is an untamed beauty to this land that begs to be seen by men’s eyes. Nature’s primal majesty lies undressed beneath the shadow of those mountains, and wonder awaits within her fertile green forests. This land is a treasure and a mystery, and should be preserved for the glory of this country and for future generations.”

*Karl D. Cronen, Founder
Letter to Congress, 1910*



WELCOME TO INDIAN MOUNTAIN!

Indian Mountain is a spectacular display of nature’s majesty with sprawling mountains, crystal-clear lakes, and amazing cavern systems. All of the land within the park boundary is preserved by the National Park Service for the benefit of the public’s enjoyment.

In addition, over 78 percent of this awe-inspiring landscape is preserved as wilderness. This designation ensures that the park’s 313,000 acres remain as pure and natural as the day Karl D. Cronen founded the park. Thanks to public endowments and the cooperation with local communities, Indian Mountain is a place where all can enjoy Wyoming’s natural environment.

There’s always something exciting going on around Indian Mountain. The local land is a stunning example of the best of the High Plains, with

- emerald-colored pine forests perfect for hiking and camping. Our three largest lakes - Acai, Black Crow, and Henderson - are teeming with trout for fishers, while the local Blue Caverns are perfect for spelunkers.
- Visitors can explore the park almost year-round, hiking through historic Blue Maiden Ridge during the winter and wandering the hot springs in the summer. Camping is available in the south region and along lake Acai (with rental agreement from the park office), and local history of the region can be found at Indian Mountain Museum, near the entrance offices.
- Enjoy your adventure in Indian Mountain National Park, and remember - be safe and follow all Park guidelines.



Questions about the park?

Contact our Information Office!

1-828-555-3393

e-mail: contact@IndianMtPark.org

emergency #: 444

Office Hours are 6 a.m. - 7 p.m.



PARK GUIDELINES

Adhere to **ALL GUIDELINES** while within Indian Mountain National Park. The Park is not liable for injuries inflicted during your visit. **PLEASE BE ALERT.**

1

PREPARE & PLAN

The wilderness can be challenging. Making the most of your trip takes careful planning. Each year, people are injured or die while exploring Indian Mountain National Park. Staying safe will require you to use good judgment, to observe the environment, and to adequately prepare yourself for your visit.

2

LEAVE NO TRACE

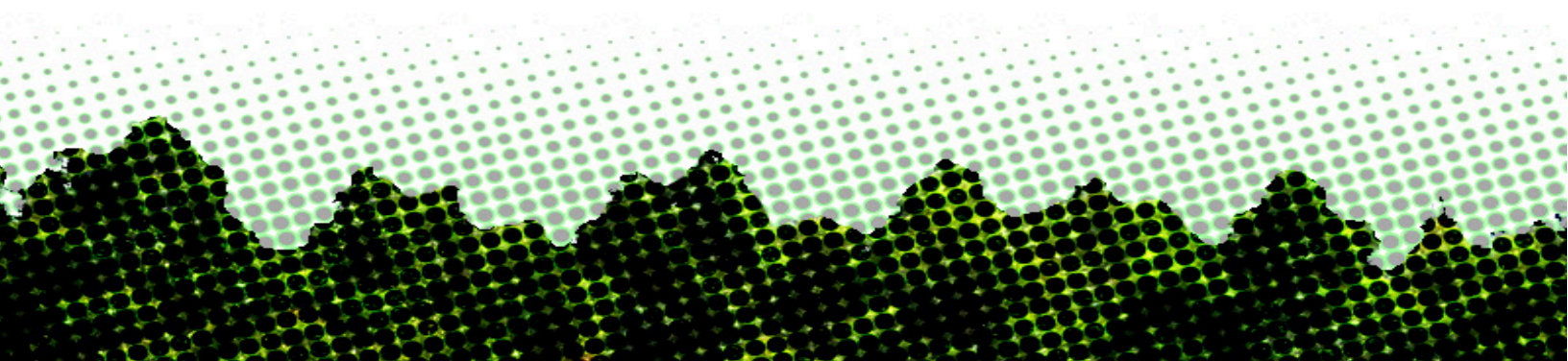
Indian Mountain National Park is meant for everyone. Treat it with respect; stay on established hiking trails, do not disturb local landmarks or cairns, obey posted warnings and signage, and leave the wilderness the way you found it. Camp in established areas and remove all waste upon your exit, including toilet paper.

3

RESPECT THE ANIMALS

There are over 20,000 species in Indian Mountain National Park, including some dangerous species. Please stay away from wildlife while hiking. Firearms are allowed inside Indian Mountain National Park, but hunting is forbidden. Fishing is allowed, but please check with the local fishing office for hours and lake status.

The Employees and Staff of Indian Mountain National Park have the right to eject you from the park for any reason upon violation of these rules. Failure to listen to park employees or staff may lead to a fine (up to \$1,000,000) or arrest and imprisonment.





WHAT CAN YOU DO AT INDIAN MOUNTAIN NATIONAL PARK?

Indian Mountain has hundreds of unique experiences for its visitors. Not only does the park provide wilderness exploration and the enjoyment of nature, but the park experts have worked hard to preserve the native historical importance of the area. We encourage our patrons to see everything we have to offer, from majestic natural views to images of Native American history.



LAKE ACTIVITIES

Indian Mountain National Park has three beautiful lakes filled with catfish, whitefish, burbot, and trout. Lake Acai and Black Crow Lake are also excellent spots for kayaking and swimming, and Lake Henderson gives one of the most scenic views of Tutt Peak.



Please remember, no combustion or electric powered boating vehicles are allowed on the lake. For more information on Lake Safety, please check with the main office.



CAMPING

With over 113.k acres of wilderness to explore, Indian Mountain promises visitors a new adventure with every visit.

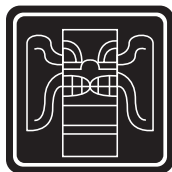


The Explorer's Circle and Black Crow camping areas have dozens of locations for tents and hook-ups for RVs, and wilderness camping is encouraged in the southern and western forested areas of the park. Please be alert for all forms of wildlife on your visit.



HIKING AND CLIMBING

Indian Mountain is famous for its numerous rolling hills, tall peaks, and meandering nature trails. Visitors can walk along Blue Maiden Ridge or down Explorer's Trail, or trek along the hundred or so unnamed hiking trails that criss-cross the park. Braver types can try climbing Tutt's Peak, where sheer granite cliffs provide challenges for rock-climbers of all skill levels.



HISTORICAL LANDMARKS

Our park is filled with numerous sites of historical and archeological importance, most of which are open to the public. Indian Mountain National Park prides itself on historical accuracy and the respectful preservation of Native American traditions and artifacts.



LOCAL CAVERNS

The local Blue Caverns are a favorite among visitors. Showing millions of years of geologic evolution in a winding maze of tunnels and caves, the Blue Caverns are a delight for anyone, young and old.

Indian Mountain National Park Reservation Dates

For a trip in...

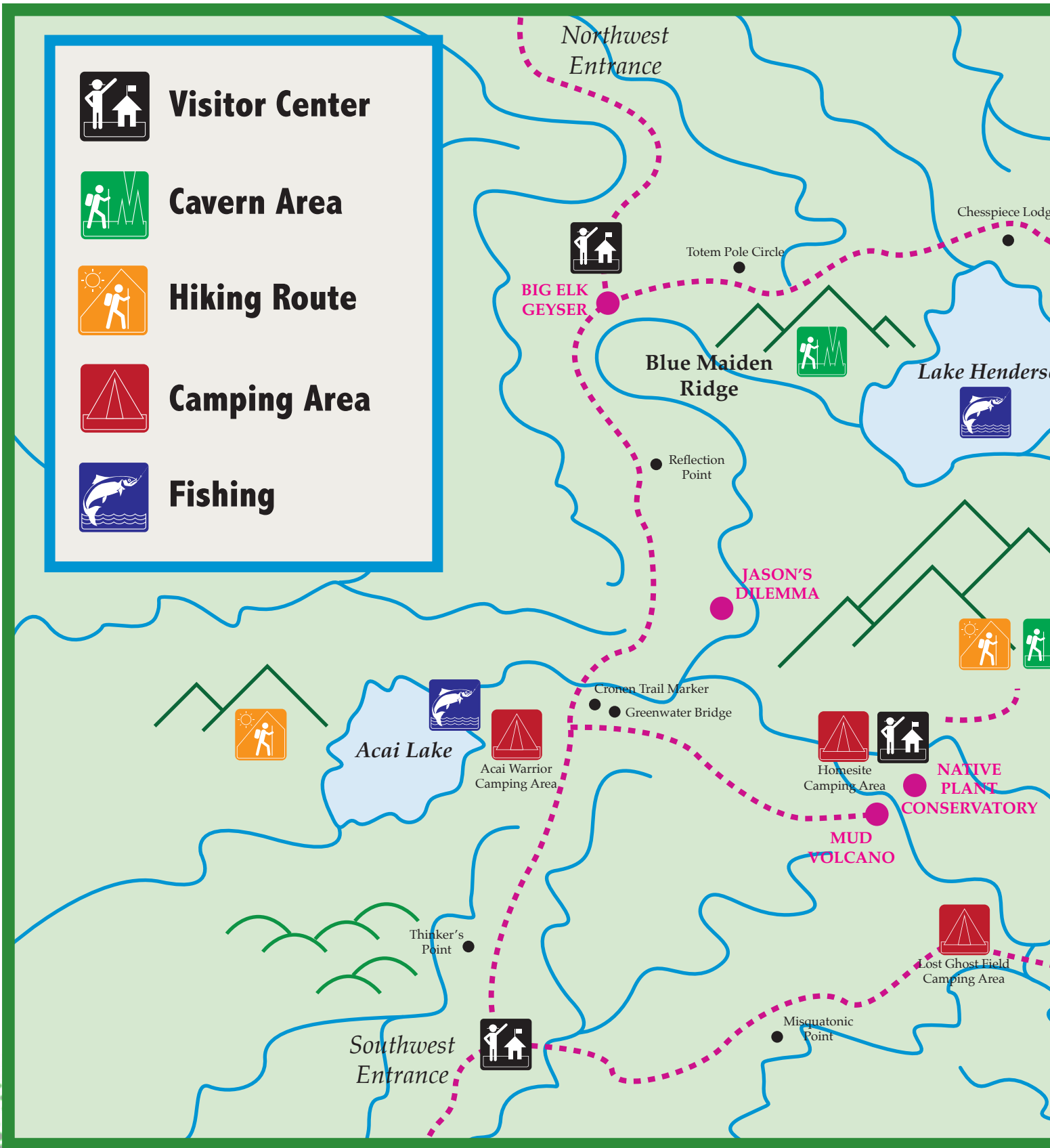
March
April
May
June
July
August
September
October
November
December
January
February

Make a reservation by...

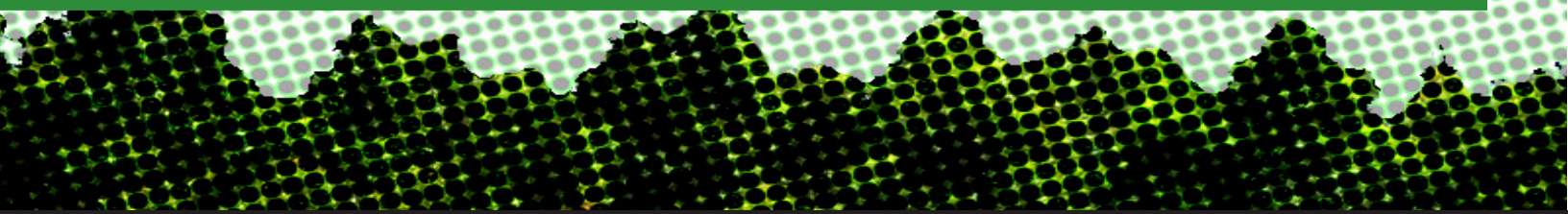
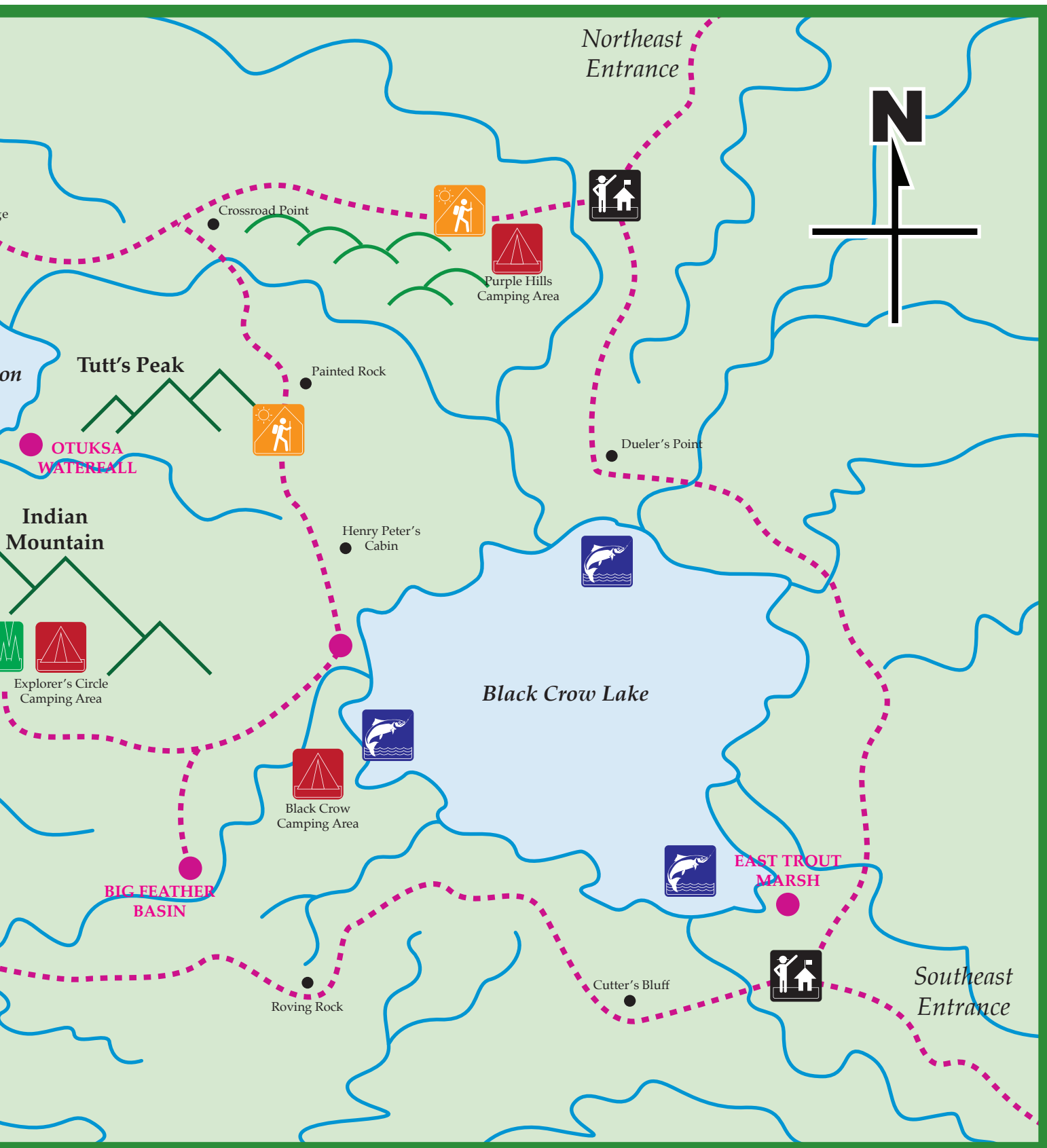
January 5
February 5
March 5
April 5
May 5
June 5
July 5
August 5
September 5
October 5
November 5
December 5



The Cradle, entrance to the three winding paths of the local Blue Caverns.



INDIAN MOUNTAIN NATIONAL PARK MAP



SEE SOME OF THE SIGHTS OF INDIAN MOUNTAIN NATIONAL PARK!

INDIAN MOUNTAIN

The mountain that gave our park its name! Standing 10,732 feet (3271m) from base to peak, this peak is the highest point of the park. The mountain is also called 'Cold Moon Peak' by native tribes for the snow that gives the mountain its scintillating white color. Although climbing to the peak is not suggested, visitors can climb to the mountain camp at the 3,000 foot mark to camp overnight!



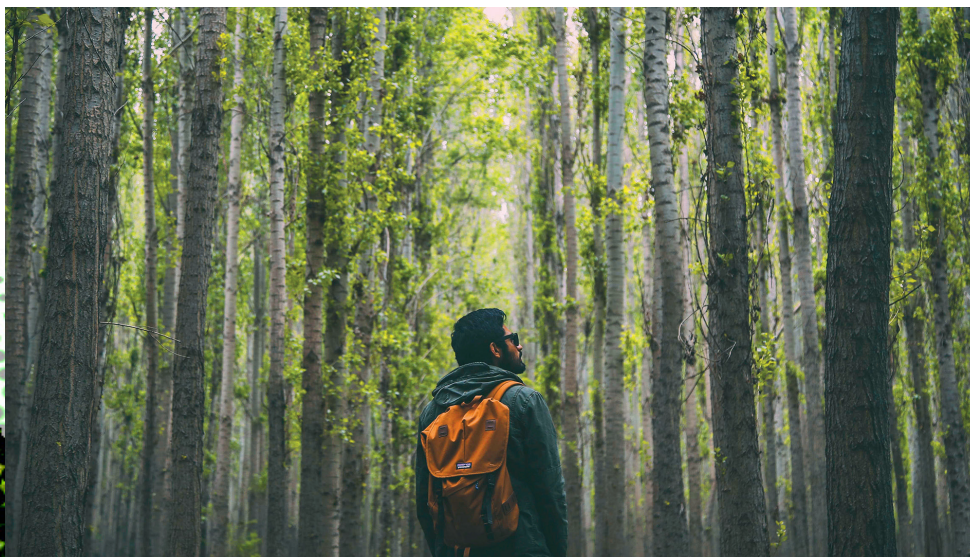
BLACK CROW LAKE

The largest lake within park boundaries! Black Crow Lake is 6,020 feet (1834m) above sea level and covers 134 miles (215km) with 98 miles (157km) of shoreline. The average depth of the lake is 139 feet (42m), while the deepest point is a whopping 220 feet (337m). Fishing and recreational diving is encouraged, and visitors who brave the winter can also enjoy seasonal ice fishing!



GREEN FATHER FOREST

As one of the best preserved old-growth forests on record, Green Father Forest is a symbol of Indian Mountain National Park's constant conservation efforts. Consisting mainly of lodepole pine, whitebark pine, aspen, and cottonwood, the forest is open for hiking year-round.





OTUSKA WATERFALL

As one of Indian Mountain National Park's most scenic spots, Otuska Waterfall is a favorite spot for visitors. Supposedly named after a legendary medicine man who was interred nearby, the waterfall served as one of the main camping spots for Cronen and his explorer's group when they were first mapping out the camp. Swimming in the river beneath the waterfall is not allowed, but visitors are still encouraged to enjoy the area's beauty!



EAST TROUT MARSH

While not technically a marsh, this wetland area is extremely popular for bird-seekers and fishermen. Migratory waterfowl come here every year on their way down south for the winter, including rare examples such as the black-bellied whistling duck and the greater white-fronted goose. Numerous raptors also frequent this area, making it an excellent spot for bird watching. Fishing is allowed here during the spring and summer.



BLUE MAIDEN RIDGE

Not only is this ridge one of the most gorgeous parts of Indian Mountain National Park, it also contains the visitor's entrance to the local Blue Caverns system that honeycombs the entire park. Supposedly named by Cronen for the deep color of the pine trees in the area, Blue Maiden Ridge is a favorite among visitors for its rolling hills, beautiful scenery, and abundance of flora and fauna.

INDIAN MOUNTAIN NATIONAL PARK

CALENDAR OF EVENTS

Please note: events may change due to weather and seasonal difficulties. Always check local schedules before attending. For seasonal events, please visit our website at www.indianmountainpark.gov

SUNDAY

- 10:00am - Junior Ranger Talk (15 minutes, at Explorer's Circle Camping Area)
- 12:30pm - Ask-A-Spelunker (4 hours, Spring through Autumn only) Find out more about the cavern system underneath the park.
- 2:00pm - Historic Indian Mountain hotel tour (1 hour, at Southeast Entrance Visitor's Area) Learn about the history and meaning of the hotel and the park.
- 2:00pm - Nature Stroll (1 hour, All Visitor's Centers)
- 7:30pm - Evening Program (1.5 hours, Southeast & Northwest Entrance Visitor's Area) Varies
- 8:00pm - Night Walk (1 hour, All Visitor's Centers, Spring through Autumn only) Enjoy the night with this evening nature walk.

MONDAY

- 10:00am - Junior Ranger Talk (15 minutes, at Explorer's Circle Camping Area)
- 11:30am - Big Elk Geyser Tour (1 hour) Listen to the history behind Big Elk Geyser
- 12:00pm - Nature Walk: Wild about Wildlife (2 hours, all Visitor's Centers)
- 2:00pm - Photo Museum Viewing (3 hours, Historic Indian Mountain Hotel) Come by and see some of the historical photos in Indian Mountain's Archive
- 7:30pm - Evening Program (1.5 hours, Southeast & Northwest Entrance Visitor's Area) Varies
- 8:00pm - Night Walk (1 hour, All Visitor's Centers, Spring through Autumn only) Enjoy the night with this evening nature walk.

TUESDAY

- 10:00am - Junior Ranger Talk (15 minutes, at Explorer's Circle Camping Area)
- 12:30pm - Ask-A-Spelunker (4 hours, Spring through Autumn only) Find out more about the cavern system underneath the park.
- 2:00pm - Historic Indian Mountain hotel tour (1 hour, at Southeast Entrance Visitor's Area) Learn about the history and meaning of the hotel and the park.
- 2:00pm - Black Crow Lake Boat Tour (2 hours, Black Crow Camping Area) Learn about the fish and fowl that occupy Black Crow Lake.
- 7:30pm - Evening Program (1.5 hours, Southeast & Northwest Entrance Visitor's Area) Varies
- 8:00pm - Night Walk (1 hour, All Visitor's Centers, Spring through Autumn only) Enjoy the night with this evening nature walk.

WEDNESDAY

- 10:00am - Junior Ranger Talk (15 minutes, at Explorer's Circle Camping Area)
- 11:30am - Big Elk Geyser Tour (1 hour) Listen to the history behind Big Elk Geyser
- 12:00pm - Nature Walk: Wild about Wildlife (2 hours, all Visitor's Centers)
- 2:00pm - Explorer's Circle Storytime (1 hour, Explorer's Circle Camping Area) Hear our storytellers tell the tale of Cronen and his exploration of the park!
- 7:30pm - Evening Program (1.5 hours, Southeast & Northwest Entrance Visitor's Area) Varies
- 8:00pm - Night Walk (1 hour, All Visitor's Centers, Spring through Autumn only) Enjoy the night with this evening nature walk.

THURSDAY

- 10:00am - Junior Ranger Talk (15 minutes, at Explorer's Circle Camping Area)
- 12:30pm - Ask-A-Spelunker (4 hours, Spring through Autumn only) Find out more about the cavern system underneath the park.
- 2:00pm - Historic Indian Mountain hotel tour (1 hour, at Southeast Entrance Visitor's Area) Learn about the history and meaning of the hotel and the park.
- 2:00pm - Black Crow Lake Boat Tour (2 hours, Black Crow Camping Area) Learn about the fish and fowl that occupy Black Crow Lake.
- 7:30pm - Evening Program (1.5 hours, Southeast & Northwest Entrance Visitor's Area) Varies
- 8:00pm - Night Walk (1 hour, All Visitor's Centers, Spring through Autumn only) Enjoy the night with this evening nature walk.

FRIDAY

- 10:00am - Junior Ranger Talk (15 minutes, at Explorer's Circle Camping Area)
- 11:30am - Big Elk Geyser Tour (1 hour) Listen to the history behind Big Elk Geyser
- 12:00pm - Nature Walk: Wild about Wildlife (2 hours, all Visitor's Centers)
- 2:00pm - Photo Museum Viewing (3 hours, Historic Indian Mountain Hotel) Come by and see some of the historical photos in Indian Mountain's Archive
- 7:30pm - Evening Program (1.5 hours, Southeast & Northwest Entrance Visitor's Area) Varies
- 8:00pm - Night Walk (1 hour, All Visitor's Centers, Spring through Autumn only) Enjoy the night with this evening nature walk.

SATURDAY

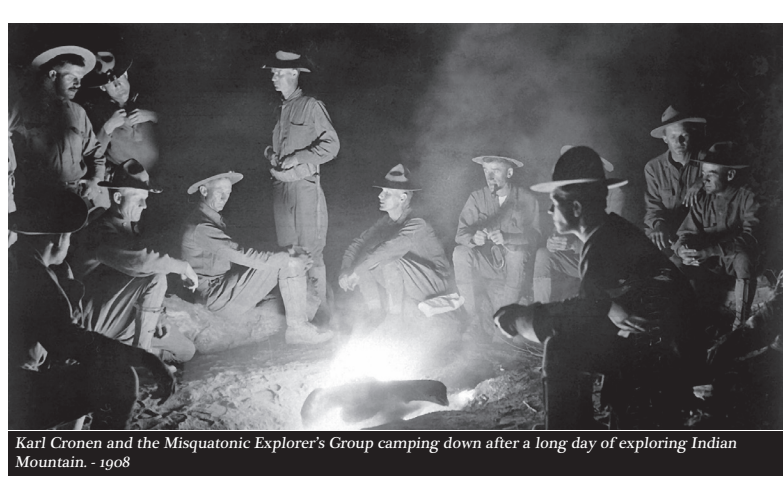
- 10:00am - Junior Ranger Talk (15 minutes, at Explorer's Circle Camping Area)
- 12:30pm - Ask-A-Spelunker (4 hours, Spring through Autumn only) Find out more about the cavern system underneath the park.
- 2:00pm - Historic Indian Mountain hotel tour (1 hour, at Southeast Entrance Visitor's Area) Learn about the history and meaning of the hotel and the park.
- 2:00pm - Nature Stroll (1 hour, All Visitor's Centers)
- 7:30pm - Evening Program (1.5 hours, Southeast & Northwest Entrance Visitor's Area) Varies
- 8:00pm - Night Walk (1 hour, All Visitor's Centers, Spring through Autumn only) Enjoy the night with this evening nature walk.

THE HISTORY OF INDIAN MOUNTAIN

Indian Mountain was first mapped out in 1908 by Karl David Cronen, Chief Lecturer in Folklore at Misquatic University. Cronen, his colleagues Henry Peters and Harold Conrad, and several dozen students were attracted to the area based on the many legends and tales told by the local Shoshonee tribes. They spent over three months exploring the 3.13k acres of what would become Indian Mountain Park.

During those three months, Cronen and his associates not only learned a great deal of the local tribes' history, but also fell in love with the land's natural, pristine beauty. After chronicling the various stories of the area, Kronen approached the U.S. Government about preserving this land for future generations. Named "Indian Mountain National Park" in honor of the local stories and tribes, the land became a symbol of preservation. From Blue Maiden Ridge to Acai Lake, from Tutt Peak to Green Father Forest, Cronen's legacy lives on.

Thanks to the Misquatic University Explorer's Group, almost all 3.13k acres of the park are mapped and open to tourists, hikes, and modern-day wilderness explorers. Visit the Indian Mountain History Museum near the park entrance to learn more about the fabulous history of our national park!



Karl Cronen and the Misquatic Explorer's Group camping down after a long day of exploring Indian Mountain. - 1908



Henry Peters' Cabin, where Cronen, Peters, and the rest of the expedition first mapped out the boundaries for Indian Mountain park in 1910.

IS INDIAN MOUNTAIN HAUNTED?

There's more to Indian Mountain than just tales of explorers and settlers. There are hundreds of stories about the park's more ghostly inhabitants, some going as far back as the mid-1800's.



Ritual Mask, Tuttsappheh, Shoshonee Tribe
Date: Unknown

One of these stories is about the *Tuttsappheh*, a local monster that supposedly makes its home in the frigid mountaintops of the park. According to local stories, the Tuttsappheh hibernates during the Spring and Summer, then comes down during the Winter to hunt migrating animals. The creature is said to be part human, part stag, and made entirely of shadow. Locals say that seeing the Tuttsappheh is extremely unlucky, but that gifts of honey and milk appease the creature - so if you go hiking here during the winter, make sure you bring some extra supplies to keep the Tuttsappheh happy!



www.indianmountainpark.gov

Presented by the National Park Foundation

www.nationalpark.org

